

Department of Engineering
Dan Gaillet, P.E., County Engineer

3137 South Liberty Street, Canton, MS 39046
Office (601) 790-2525 FAX (601) 859-3430

MEMORANDUM

January 16, 2019

To: Sheila Jones, Supervisor, District I
Trey Baxter, Supervisor, District II
Gerald Steen, Supervisor, District III
David Bishop, Supervisor, District IV
Paul Griffin, Supervisor, District V

From: Dan Gaillet, P.E. *DL*
County Engineer

Re: Sink Hole
110 Camden Lane
Camden Pointe of Caroline

A sink hole has formed due to the failure of pipe that carries roadway storm water from Savoy Park, along private property at 110 Camden Lane.

The Engineering Department suspects that the pipes have separated which is causing a dangerous sink hole. However, a full determination of damage will take place after authorization is granted to work on private property.

It is the recommendation of the Engineering Department the Board authorize repairs to be made to ensure that storm water is moved from point-to-point to prevent damage to the roadway and further damage to the storm water system.

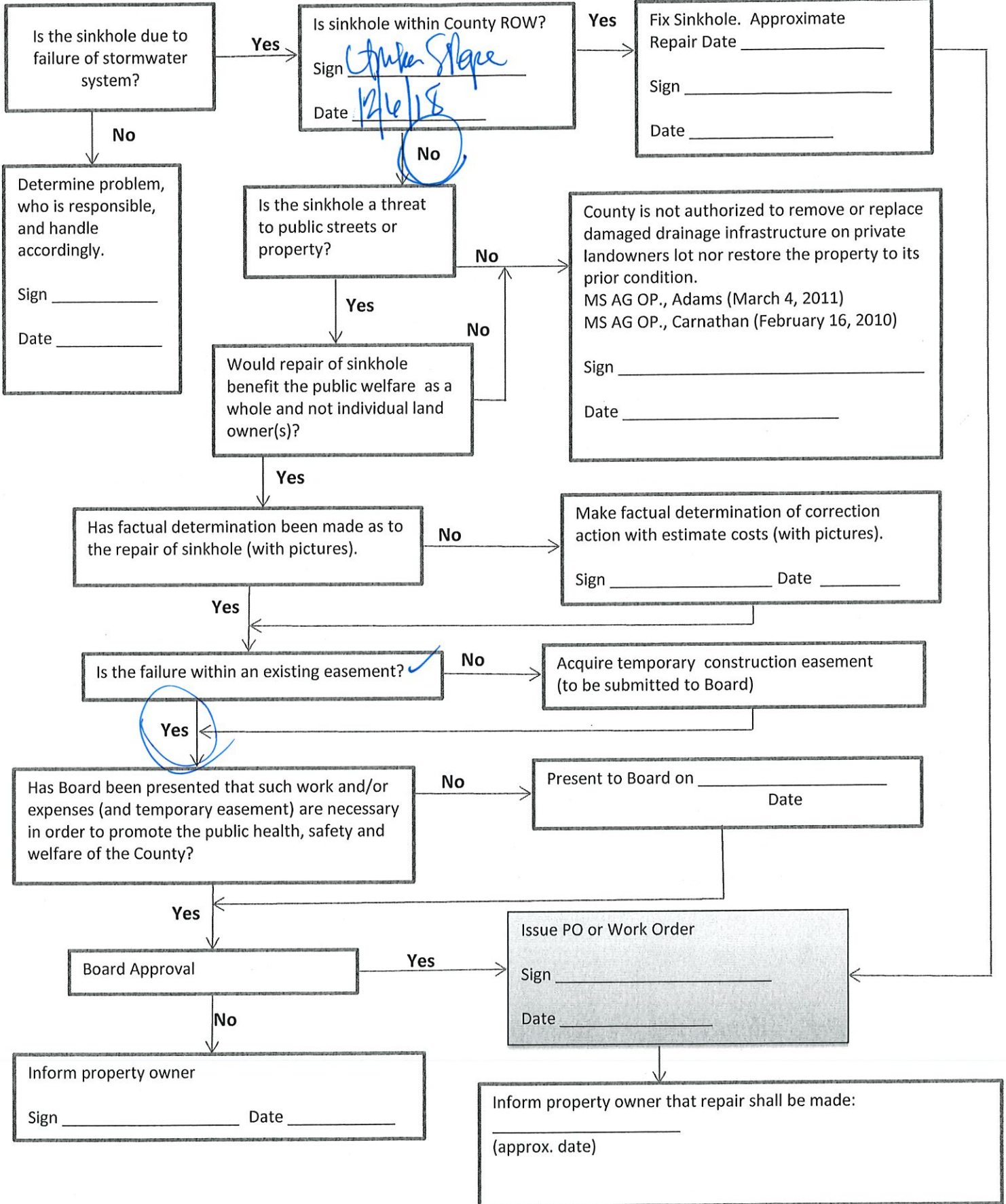
Therefore, it is in the best interest of the County and the public's health, safety and welfare to make the repairs, based on:

- Separated storm water pipes;
- Sinkholes have formed over the failed areas.

SINKHOLE FLOW CHART

LOCATION: 110 Camden Lane

DATE: 12/6/2018





PLATTED & SURVEYED BY
H D LANG AND ASSOCIATES, INC.
ENGINEERS / LAND SURVEYORS
4039 NORTH STATE STREET
JACKSON, MISSISSIPPI
(601) 362-4886

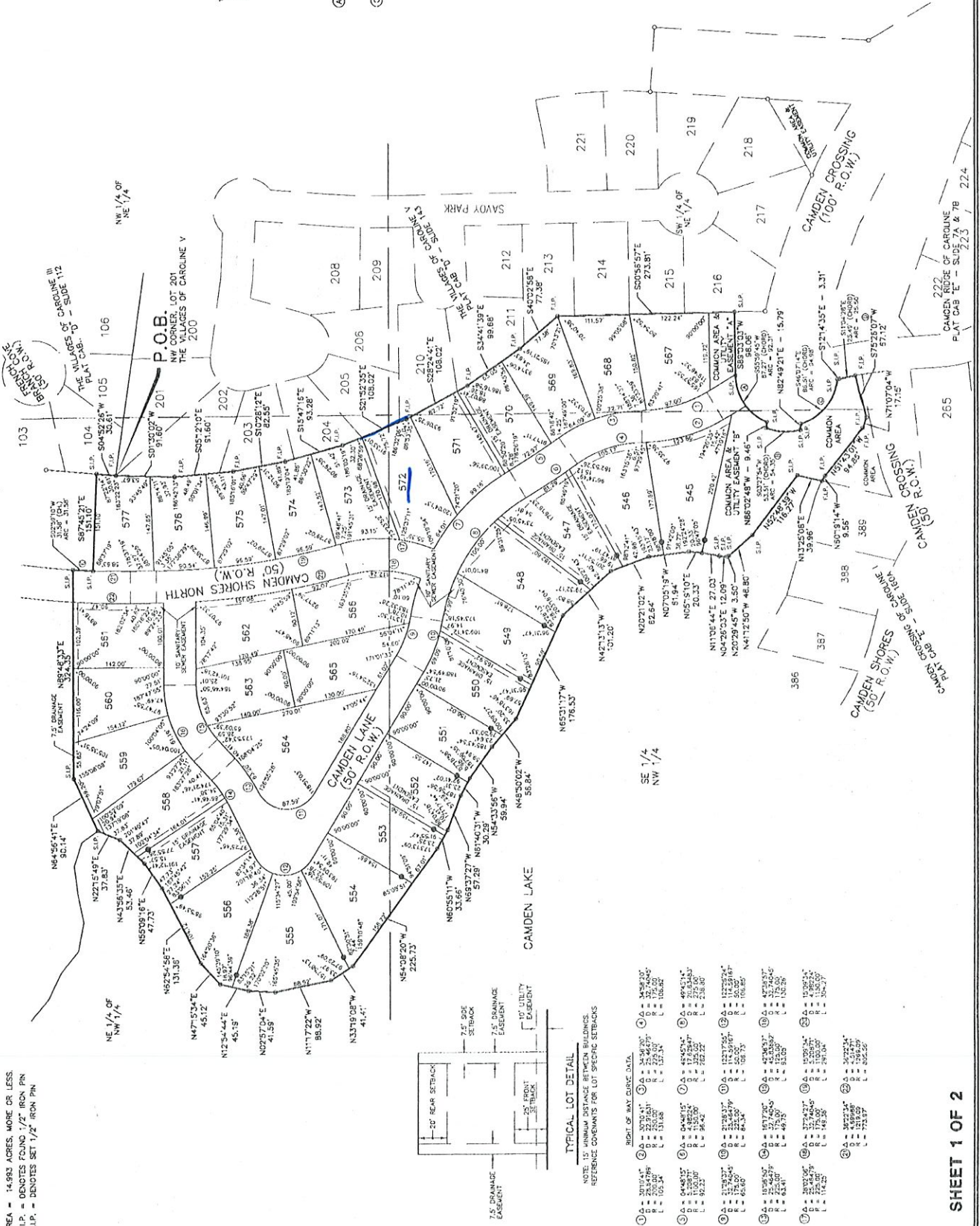


BOUNDARY CURVE DATA

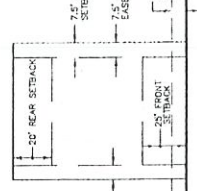
①	Δ	171°50'23"	⑤	Δ	34.8014'
②	Δ	71°19'57"	⑥	Δ	64.3772'
③	Δ	80.00'	⑦	Δ	89.00'
④	Δ	24.15'	⑧	Δ	54.35'
⑨	Δ	173°35'32"	⑩	Δ	98.1822'
⑪	Δ	80.00'	⑫	Δ	62.55.00'
⑬	Δ	24.15'	⑭	Δ	94.35'
⑮	Δ	152°23'34"	⑯	Δ	4.58968'
⑰	Δ	158.968'	⑱	Δ	71.517'
⑲	Δ	71.517'			

CAMDEN POINTE OF CAROLINE

SITUATED IN THE WEST 1/2 OF THE NORTHEAST 1/4 AND THE EAST 1/2 OF THE NORTHWEST 1/4 OF SECTION 14, TOWNSHIP 8 NORTH - RANGE 1 EAST MADISON COUNTY, MISSISSIPPI



- NOTES:
1. THIS SUBDIVISION LIES WITHIN THE LIMITS ESTABLISHED FOR ZONE "X" (NO SHADING) ACCORDING TO FIRM MAP NUMBER 28699C0395 F, EFFECTIVE MARCH 10, 2010.
 2. DIMENSIONS ALONG CURVES ARE CHORD DISTANCES.
 3. SURVEY CLASSIFICATION "B" IS THE LINE OF THE VILLAGES OF CAROLINE V PLAT CABINET "D" - SLIDE 143.
 4. OF CAROLINE V PLAT CABINET "D" - SLIDE 143.
 5. IRON PINS SET AT ALL LOT CORNERS.
 6. ● INDICATES SET IRON REFERENCE PIN WHICH IS AT THE REAR SETBACK LINE (20') ON EACH SIDE LOT LINE.
 7. AREA = 14.993 ACRES, MORE OR LESS.
 - F.I.P. = DENOTES FOUND 1/2" IRON PIN
 - S.I.P. = DENOTES SET 1/2" IRON PIN



TYPICAL LOT DETAIL
NOTE: 15' MINIMUM DISTANCE BETWEEN BUILDINGS.
REFERENCE COMMENTS FOR LOT SPECIFIC SETBACKS

SIGHT OF WAY CURVE DATA

①	Δ	30.00'	⑩	Δ	14.9820'
②	Δ	30.00'	⑪	Δ	17.00'
③	Δ	30.00'	⑫	Δ	17.00'
④	Δ	103.34'	⑬	Δ	103.34'
⑤	Δ	64.48'	⑭	Δ	49.31'
⑥	Δ	4.8824'	⑮	Δ	17.00'
⑦	Δ	17.00'	⑯	Δ	17.00'
⑧	Δ	49.31'	⑰	Δ	17.00'
⑨	Δ	17.00'	⑱	Δ	17.00'
⑲	Δ	17.00'	⑳	Δ	17.00'
⑳	Δ	17.00'	㉑	Δ	17.00'
㉑	Δ	17.00'	㉒	Δ	17.00'
㉒	Δ	17.00'	㉓	Δ	17.00'
㉓	Δ	17.00'	㉔	Δ	17.00'
㉔	Δ	17.00'	㉕	Δ	17.00'
㉕	Δ	17.00'	㉖	Δ	17.00'
㉖	Δ	17.00'	㉗	Δ	17.00'
㉗	Δ	17.00'	㉘	Δ	17.00'
㉘	Δ	17.00'	㉙	Δ	17.00'
㉙	Δ	17.00'	㉚	Δ	17.00'
㉚	Δ	17.00'	㉛	Δ	17.00'
㉛	Δ	17.00'	㉜	Δ	17.00'
㉜	Δ	17.00'	㉝	Δ	17.00'
㉝	Δ	17.00'	㉞	Δ	17.00'
㉞	Δ	17.00'	㉟	Δ	17.00'
㉟	Δ	17.00'	㊱	Δ	17.00'
㊱	Δ	17.00'	㊲	Δ	17.00'
㊲	Δ	17.00'	㊳	Δ	17.00'
㊳	Δ	17.00'	㊴	Δ	17.00'
㊴	Δ	17.00'	㊵	Δ	17.00'
㊵	Δ	17.00'	㊶	Δ	17.00'
㊶	Δ	17.00'	㊷	Δ	17.00'
㊷	Δ	17.00'	㊸	Δ	17.00'
㊸	Δ	17.00'	㊹	Δ	17.00'
㊹	Δ	17.00'	㊺	Δ	17.00'
㊺	Δ	17.00'	㊻	Δ	17.00'
㊻	Δ	17.00'	㊼	Δ	17.00'
㊼	Δ	17.00'	㊽	Δ	17.00'
㊽	Δ	17.00'	㊾	Δ	17.00'
㊾	Δ	17.00'	㊿	Δ	17.00'

110 Camden Lane